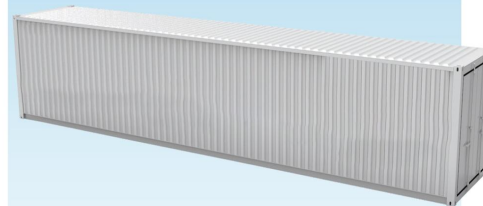




# EnTank Energy-Type Containerized Battery Energy Storage System



## PRODUCT FEATURES

- + Uses highly safe lithium iron phosphate batteries with improved energy density and long service cycle.
- + Employs standard modularized pack and cluster design to allow for easy installation and maintenance.
- + Works with comprehensive battery performance and safety management.
- + Adopts unitized integration mode, which allows for the system's scalability by using batteries of different power and capacities.
- + Guarantees safe and stable system operation with a unique heat dissipation airflow design, automatic alarm, and heptafluoropropane fire extinguishing system.
- + Conforms to GB, UL, IEC, and UN38.3.

## PRODUCT INTRODUCTION

The RAJA energy-type battery system is mainly composed of the energy storage battery, battery management system (BMS), monitoring system, fire protection system, temperature control system, and container auxiliary system. The product is applicable to power plants, power grid, and user side, and can be customized to meet actual requirements. It can be used for 1C or lower charging and discharging scenarios.

## APPLICATION SCENARIOS

- + Peak-shifting, demand control, and demand response
- + Power plant peak load shifting, new energy generation and consumption, and electricity quality improvement
- + Grid peak load shifting, line loss reduction, and electricity quality improvement.
- + PV-ESS integration and micro grid construction
- + Emergency backup power

## PRODUCT ADVANTAGES

- + High integration and high security
- + Up to 2.5 MWh battery system installed in a single 40-foot container
- + Less than 3% of sock detection error
- + Continuous 1C charge and discharge

## EnTank Energy- Type Containerized Battery Energy Storage System Specifications



Pictures for reference only. Please refer to the actual products

Technical Specifications		
Model	RAJA-GESS-B3-E025	RAJA-GESS-B3-M021
Rated Energy [MWh]	2.5	2.1
Rated Voltage [V]	729.6	729.6
DC Voltage Range [V]	638-820	638-820
Max. Continuous Charging Rate (C)	0.5	1
Max. Continuous Discharging Rate (C)	0.5	1
Communication Mode	Ethernet, GPRS, RS485, CAN2.0	Ethernet, GPRS, RS485, CAN2.0
Container Size[W*D*H, mm]	12192*2896*2438	12192*2896*2438
Weight[T]	~30	~28
Protection Rating	IP54	IP54
Fire Protection System	Yes	Yes
Cooling Method	Air conditioning	Air conditioning
Noise Level (dB)	<65	<65
Operating Temperature (°C)	-20 to+60	-20 to+60
Storage Temperature (°C)	-20 to+60	-20 to+60
Relative Humidity[non-condensing]	5%-95%	5%-95%
Highest Altitude	4500m (derating above 3000m)	4500m (derating above 3000m)